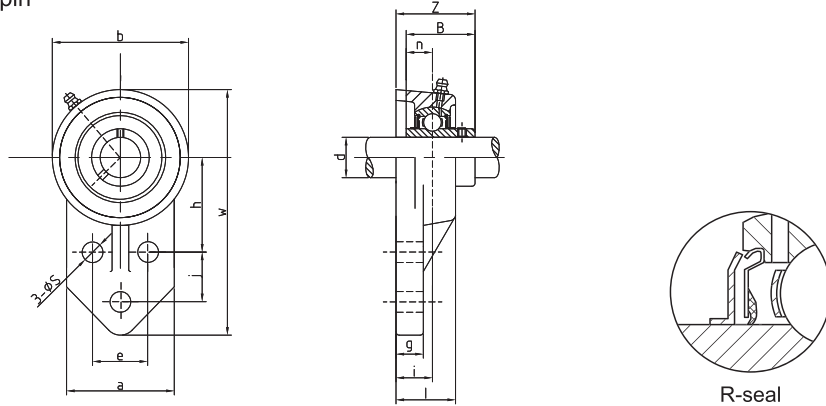


# Flange Units – Flang Bracket 3-Bolt Set Screw Locking

- Standard duty, high-grade cast iron
- Solid base housing design
- Wide inner ring bearing
- Relubricatable unit with anti-rotation pin
- Standard seal: R-seal



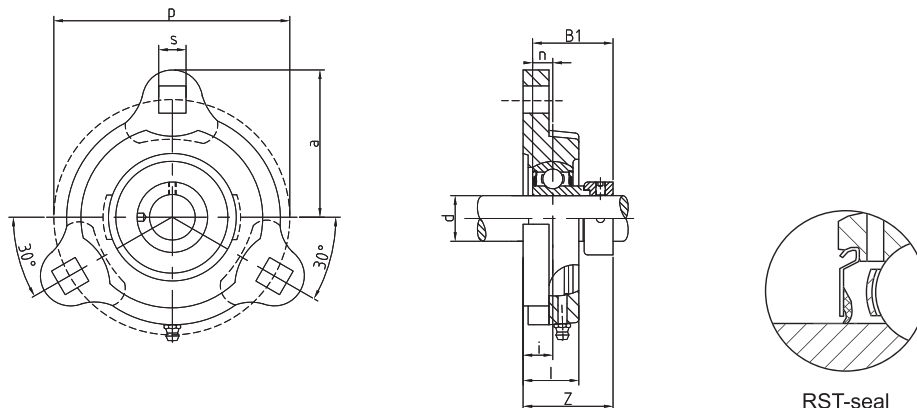
## UCFB200 Series

Bearing Unit	Shaft Dia.		Dimensions in. mm												Bearing No.	Housing No.
	(in.)	(mm)	w	b	a	i	l	s	g	h	j	e	z	Bolt Size		
UCFB201-8	1/2		4-1/4 108	2-1/2 62.5	2-3/8 60.3	5/8 15.9	1 25.4	25/64 9.9	0.314 8	1-11/16 42.9	7/8 22.2	1-1/2 38.1	1.35 34.2	5/16 M8	UC201-8	FB204
UCFB202-10	5/8														UC202-10	
UCFB203-11	11/16														UC203-11	
UCFB201		12													UC201	
UCFB202		15													UC202	
UCFB203		17	UC203													
UCFB204-12	3/4		4-1/4 108	2-1/2 63.5	2-3/8 60.3	5/8 15.9	1 25.4	25/64 9.9	5/16 8	1-11/16 42.9	7/8 22.2	1-1/2 38.1	1.35 34.2	5/16 M8	UC204-12	FB204
UCFB204-13	13/16														UC204-13	
UCFB204		20													UC204	
UCFB205-13	13/16		4-3/4 120.7	2-3/4 69.9	2-1/2 63.5	21/32 16.7	1.122 28.5	25/64 9.9	3/8 9.5	1-13/16 46	1-1/8 28.6	1-5/8 41.3	1.43 36.4	5/16 M8	UC205-13	FB205
UCFB205-14	7/8														UC205-14	
UCFB205-15	15/16														UC205-15	
UCFB205-16	1														UC205-16	
UCFB205		25													UC205	
UCFB206-17	1-1/16		5-3/8 136.5	3-1/4 82.6	2-3/4 69.9	47/64 18.7	1-1/4 32	25/64 9.9	3/8 9.5	2-1/16 52.4	1-1/4 31.8	1-7/8 47.6	1.61 40.9	5/16 M8	UC206-17	FB206
UCFB206-18	1-1/8														UC206-18	
UCFB206-19	1-3/16														UC206-19	
UCFB206-20	1-1/4														UC206-20	
UCFB206		30													UC206	
UCFB207-20	1-1/4		6-1/8 155.6	3-3/4 95.3	3-1/4 82.6	53/64 21	1.437 36.5	33/64 13.1	1/2 12.7	2-3/8 60.3	1-1/4 31.8	2 50.8	1.83 46.4	7/16 M12	UC207-20	FB207
UCFB207-21	1-5/16														UC207-21	
UCFB207-22	1-3/8														UC207-22	
UCFB207-23	1-7/16														UC207-23	
UCFB207		35													UC207	
UCFB208-24	1-1/2		6-15/32 164.3	3-15/16 100	3-1/16 77.8	53/64 21	1-13/32 35.7	15/32 11.9	5/8 15.9	2-3/8 60.3	1-5/8 41.3	1-31/32 50	2.02 51.2	3/8 M10	UC208-24	FB208
UCFB208-25	1-9/16														UC208-25	
UCFB208		40													UC208	
UCFB209-26	1-5/8		6-27/32 173.9	4-3/16 106.4	3-5/32 80.2	55/64 21.8	1-1/2 38	15/32 11.9	23/32 18.3	2-9/16 65.1	1-11/16 42.9	2-1/8 54	2.02 51.2	3/8 M10	UC209-26	FB209
UCFB209-27	1-11/16														UC209-27	
UCFB209-28	1-3/4														UC209-28	
UCFB209		45													UC209	
UCFB210-29	1-13/16														7-1/2 190.5	
UCFB210-30	1-7/8		UC210-30													
UCFB210-31	1-15/16		UC210-31													
UCFB210-32	2		UC210-32													
UCFB210		50	UC210													

Note: 1) Relubricatable types have suffix "D1". If maintenance free type is needed, please order without suffix "D1".

# Flange Units – Ductile 3-Bolt Eccentric Locking Collar

- Standard duty, high strength ductile iron
- Solid foot housing design
- Narrow inner ring bearing
- Relubricatable unit
- Standard seal: RST-seal



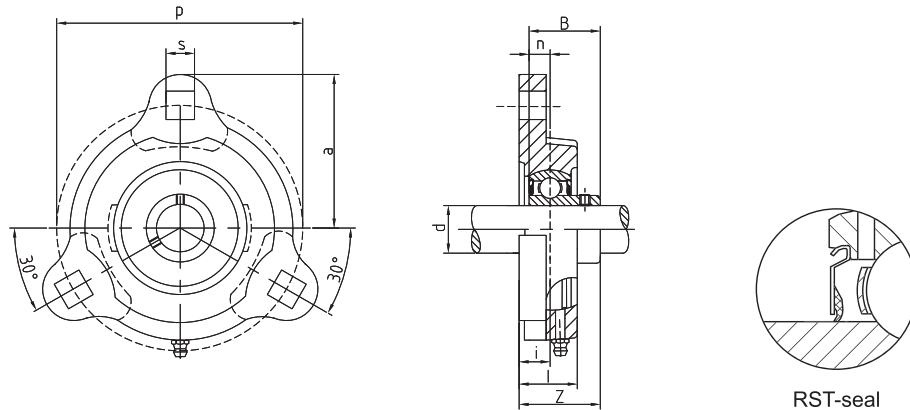
## SAFCT200 Series

Bearing Unit	Shaft Dia.		Dimensions									Bearing No.	Housing No.
	(in.)	(mm)	a	P	i	l	S	Z	B1	n	Bolt Size		
SAFCT201-8	1/2		1-19/32 40.5	2-1/2 63.5	25/64 9.8	11/16 17.5	9/32 7.2	1-1/4 31.9	1.126 28.6	0.256 6.5	1/4 M6	SA201-8	FCT203
SAFCT202-9	9/16											SA202-9	
SAFCT202-10	5/8											SA202-10	
SAFCT203-11	11/16											SA203-11	
SAFCT201		12										SA201	
SAFCT202		15										SA202	
SAFCT203		17	SA203										
SAFCT204-12	3/4		1-25/32 45.3	2-13/16 71.4	7/16 11.1	25/32 20	11/32 8.7	1-23/64 34.5	1.2204 31	0.2953 7.5	5/16 M8	SA204-12	FCT204
SAFCT204		20	SA204										
SAFCT205-13	13/16		1-7/8 47.5	3 76.2	0.4646 11.8	25/32 20	11/32 8.7	1-21/64 33.8	1.2204 31	0.2953 7.5	5/16 M8	SA205-13	FCT205
SAFCT205-14	7/8											SA205-14	
SAFCT205-15	15/16											SA205-15	
SAFCT205-16	1											SA205-16	
SAFCT205		25										SA205	
SAFCT206-17	1-1/16		2-7/32 56.5	3-9/16 90.5	15/32 12	7/8 22	13/32 10.3	1-17/32 38.7	1.4055 35.7	0.354 9	5/16 M8	SA206-17	FCT206
SAFCT206-18	1-1/8											SA206-18	
SAFCT206-19	1-3/16											SA206-19	
SAFCT206-20	1-1/4											SA206-20	
SAFCT206		30										SA206	
SAFCT207-20	1-1/4		2-13/32 61	3-15/16 100	33/64 13	15/16 24	13/32 10.3	1-43/64 42.4	1.5315 38.9	0.374 9.5	5/16 M8	SA207-20	FCT207
SAFCT207-21	1-5/16											SA207-21	
SAFCT207-22	1-3/8											SA207-22	
SAFCT207-23	1-7/16											SA207-23	
SAFCT207		35										SA207	

Note: 1) Relubricatable types have suffix "D1". If maintenance free type is needed, please order without suffix "D1".

# Flange Units – Ductile 3-Bolt Set Screw Locking

- Standard duty, high strength ductile iron
- Solid foot housing design
- Narrow inner ring bearing
- Relubricatable unit
- Standard seal: RST-seal



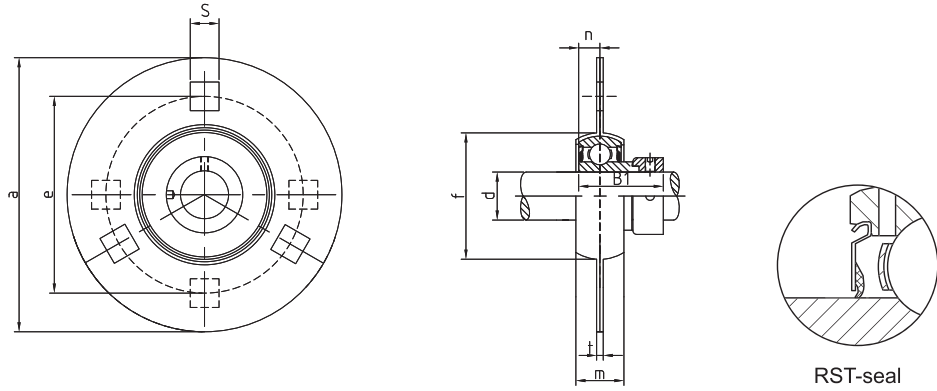
## SBFCT200 Series

Bearing Unit	Shaft Dia.		Dimensions									Bearing No.	Housing No.
	(in.)	(mm)	a	P	i	l	S	Z	B	n	Bolt Size		
SBFCT201-8	1/2		1-19/32 40.5	2-1/2 63.5	25/64 9.8	11/16 17.5	9/32 7.2	1-1/64 25.8	0.8611 22	0.256 6.5	1/4 M6	SB201-8	FCT203
SBFCT202-9	9/16											SB202-9	
SBFCT202-10	5/8											SB202-10	
SBFCT203-11	11/16											SB203-11	
SBFCT201		12										SB201	
SBFCT202		15										SB202	
SBFCT203		17	SB203										
SBFCT204-12	3/4		1-25/32 45.3	2-13/16 71.4	7/16 11.1	25/32 20	11/32 8.7	1-9/64 29	0.9843 25	0.2953 7.5	5/16 M8	SB204-12	FCT204
SBFCT204-13	13/16											SB204-13	
SBFCT204		20										SB204	
SBFCT205-12	3/4		1-7/8 47.5	3 76.2	0.4646 11.8	25/32 20	11/32 8.7	1-11/64 29.8	1.0630 27	0.2953 7.5	5/16 M8	SB205-12	FCT205
SBFCT205-13	13/16											SB205-13	
SBFCT205-14	7/8											SB205-14	
SBFCT205-15	15/16											SB205-15	
SBFCT205-16	1											SB205-16	
SBFCT205		25										SB205	
SBFCT206-17	1-1/16		2-7/32 56.5	3-9/16 90.5	15/32 12	7/8 22	13/32 10.3	1-11/32 34	1.1811 30	0.354 9	5/16 M8	SB206-17	FCT206
SBFCT206-18	1-1/8											SB206-18	
SBFCT206-19	1-3/16											SB206-19	
SBFCT206-20	1-1/4											SB206-20	
SBFCT206		30										SB206	
SBFCT207-20	1-1/4		2-13/32 61	3-15/16 100	33/64 13	15/16 24	13/32 10.3	1-7/16 36.5	1.2598 32	0.374 9.5	5/16 M8	SB207-20	FCT207
SBFCT207-21	1-5/16											SB207-21	
SBFCT207-22	1-3/8											SB207-22	
SBFCT207-23	1-7/16											SB207-23	
SBFCT207		35										SB207	

Note: 1) Relubricatable types have suffix "D1". If maintenance free type is needed, please order without suffix "D1".

# Flange Units – Pressed Steel 3-Bolt & 4-Bolt Eccentric Locking Collar

- Two light duty, self-aligning pressed steel housings
- Narrow inner ring bearing
- Zinc plated stamped steel
- Non-relubricatable unit
- Standard seal: RST-seal

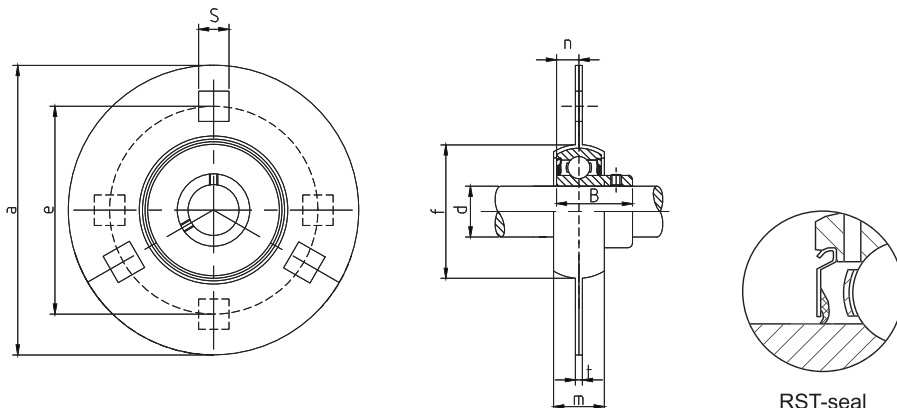


## SAPF200 Series

Bearing Unit	Shaft Dia.		Dimensions									Bearing No.	Housing No.
	(in.)	(mm)	a	e	t / 2	m	s	f	B1	n	Bolt Size		
SAPF201-8	1/2		3-3/16 80.9	2-1/2 63.5	0.074 1.9	9/16 14	9/32 7	1-15/16 49	1.1260 28.6	0.256 6.5	1/4 M6	SA201-8	PF203
SAPF202-9	9/16											SA202-9	
SAPF202-10	5/8											SA202-10	
SAPF203-11	11/16											SA203-11	
SAPF201		12										SA201	
SAPF202		15										SA202	
SAPF203		17	SA203										
SAPF204-12	3/4		3-9/16 90.5	2-13/16 71.4	0.083 2.1	5/8 16	11/32 9	2-3/16 56	1.2205 31	0.295 7.5	5/16 M8	SA204-12	PF204
SAPF204		20										SA204	
SAPF205-13	13/16		3-3/4 95.3	3 76.2	0.083 2.1	11/16 17	11/32 9	2-3/8 66	1.2205 31	0.295 7.5	5/16 M8	SA205-13	PF205
SAPF205-14	7/8											SA205-14	
SAPF205-15	15/16											SA205-15	
SAPF205-16	1											SA205-16	
SAPF205		25										SA205	
SAPF206-17	1-1/16		4-7/16 113	3-9/16 90	0.104 2.6	11/16 17	13/32 10	2-13/16 71	1.4055 35.7	0.354 9	3/8 M10	SA206-17	PF206
SAPF206-18	1-1/8											SA206-18	
SAPF206-19	1-3/16											SA206-19	
SAPF206-20	1-1/4											SA206-20	
SAPF206		30										SA206	
SAPF207-20	1-1/4		4-13/16 122.2	3-15/16 100	0.104 2.6	3/4 19	13/32 10	3-3/16 81	1.5315 38.9	0.374 9.5	3/8 M10	SA207-20	PF207
SAPF207-21	1-5/16											SA207-21	
SAPF207-22	1-3/8											SA207-22	
SAPF207-23	1-7/16											SA207-23	
SAPF207		35										SA207	

# Flange Units – Pressed Steel 3-Bolt & 4-Bolt Set Screw Locking

- Two light duty, self-aligning pressed steel housings
- Narrow inner ring bearing
- Zinc plated stamped steel
- Non-relubricatable unit
- Standard seal: RST-seal



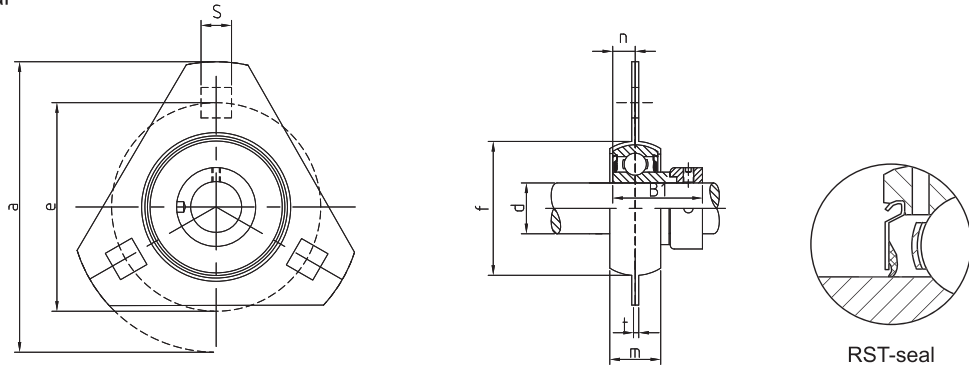
RST-seal

## SBPF200 Series

Bearing Unit	Shaft Dia.		Dimensions									Bearing No.	Housing No.
	(in.)	(mm)	a	e	t / 2	m	s	f	B	n	Bolt Size		
SBPF201-8	1/2		3-3/16 81	2-1/2 64	0.74 1.9	9/16 14	9/32 7	1-15/16 49	0.8858 22.5	0.256 6.5	1/4 M6	SB201-8	PF203
SBPF202-9	9/16											SB202-9	
SBPF202-10	5/8											SB202-10	
SBPF203-11	11/16											SB203-11	
SBPF201		12										SB201	
SBPF202		15										SB202	
SBPF203		17	SB203										
SBPF204-12	3/4		3-9/16 90	2-13/16 71	0.083 2.1	5/8 16	11/32 9	2-3/16 56	0.9843 25	0.295 7.5	5/16 M8	SB204-12	PF204
SBPF204-13	13/16											SB204-13	
SBPF204		20										SB204	
SBPF205-12	3/4		3-3/4 95.3	3 76	0.083 2.1	11/16 17	11/32 9	2-3/8 66	1.0630 27	0.295 7.5	5/16 M8	SB205-12	PF205
SBPF205-13	13/16											SB205-13	
SBPF205-14	7/8											SB205-14	
SBPF205-15	15/16											SB205-15	
SBPF205-16	1											SB205-16	
SBPF205		25										SB205	
SBPF206-17	1-1/16		4-7/16 113	3-9/16 90	0.104 2.6	11/16 17	13/32 10	2-13/16 71	1.1811 30	0.354 9	3/8 M10	SB206-17	PF206
SBPF206-18	1-1/8											SB206-18	
SBPF206-19	1-3/16											SB206-19	
SBPF206-20	1-1/4											SB206-20	
SBPF206		30										SB206	
SBPF207-20	1-1/4		4-13/16 122	3-15/16 100	0.104 2.6	3/4 19	13/32 10	3-3/16 81	1.2598 32	0.374 9.5	3/8 M10	SB207-20	PF207
SBPF207-21	1-5/16											SB207-21	
SBPF207-22	1-3/8											SB207-22	
SBPF207-23	1-7/16											SB207-23	
SBPF207		35										SB207	

# Flange Units – Pressed Steel 3-Bolt Triangle Eccentric Locking Collar

- Two light duty, self-aligning pressed steel housings
- Narrow inner ring bearing
- Zinc plated stamped steel
- Non-re-lubricatable unit
- Standard seal: RST-seal

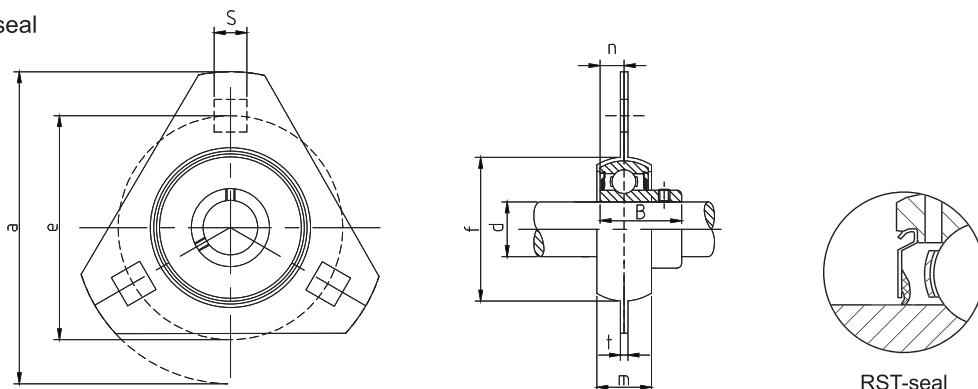


## SAPFT200 Series

Bearing Unit	Shaft Dia.		Dimensions									Bearing No.	Housing No.
	(in.)	(mm)	a	e	s	m	t / 2	f	B1	n	Bolt Size		
SAPFT201-8	1/2		3-3/16 80.9	2-1/2 64	0.2756 7	9/16 14	0.74 1.9	1-15/16 49	1.1260 28.6	0.256 6.5	1/4 M6	SA201-8	PFT203
SAPFT202-9	9/16											SA202-9	
SAPFT202-10	5/8											SA202-10	
SAPFT203-11	11/16											SA203-11	
SAPFT201		12										SA201	
SAPFT202		15	SA202										
SAPFT203		17	SA203										
SAPFT204-12	3/4		3-9/16 90.5	2-13/16 71	11/32 9	5/8 16	0.083 2.1	2-3/16 56	1.2205 31	0.295 7.5	5/16 M8	SA204-12	PFT204
SAPFT204		20	SA204										
SAPFT205-13	13/16		3-3/4 95.3	3 76	11/32 9	11/16 17	0.083 2.1	2-3/8 66	1.2205 31	0.295 7.5	5/16 M8	SA205-13	PFT205
SAPFT205-14	7/8											SA205-14	
SAPFT205-15	15/16											SA205-15	
SAPFT205-16	1											SA205-16	
SAPFT205		25										SA205	
SAPFT206-17	1-1/16		4-7/16 113	3-9/16 90	0.4331 11	11/16 17	0.104 2.6	2-13/16 71	1.4055 35.7	0.354 9	3/8 M10	SA206-17	PFT206
SAPFT206-18	1-1/8											SA206-18	
SAPFT206-19	1-3/16											SA206-19	
SAPFT206-20	1-1/4											SA206-20	
SAPFT206		30										SA206	
SAPFT207-20	1-1/4		4-13/16 122.2	3-15/16 100	0.4331 11	3/4 19	0.104 2.6	3-3/16 81	1.5315 38.9	0.374 9.5	3/8 M10	SA207-20	PFT207
SAPFT207-21	1-5/16											SA207-21	
SAPFT207-22	1-3/8											SA207-22	
SAPFT207-23	1-7/16											SA207-23	
SAPFT207		35										SA207	

# Flange Units – Pressed Steel 3-Bolt Triangle Set Screw Locking

- Two light duty, self-aligning pressed steel housings
- Narrow inner ring bearing
- Zinc plated stamped steel
- Non-relubricatable unit
- Standard seal: RST-seal



## SBPFT200 Series

Bearing Unit	Shaft Dia.		Dimensions in.									Bearing No.	Housing No.
	(in.)	(mm)	a	e	s	m	t / 2	f	B	n	Bolt Size		
SBPFT201-8	1/2		3-3/16 <b>81</b>	2-1/2 <b>64</b>	0.2756 <b>7</b>	9/16 <b>14</b>	0.74 <b>1.9</b>	1-15/16 <b>49</b>	0.8858 <b>22.5</b>	0.256 <b>6.5</b>	1/4 <b>M6</b>	SB201-8	PFT203
SBPFT202-9	9/16											SB202-9	
SBPFT202-10	5/8											SB202-10	
SBPFT203-11	11/16											SB203-11	
SBPFT201		12										SB201	
SBPFT202		15										SB202	
SBPFT203		17	SB203										
SBPFT204-12	3/4		3-9/16 <b>90</b>	2-13/16 <b>71</b>	11/32 <b>9</b>	5/8 <b>16</b>	0.083 <b>2.1</b>	2-3/16 <b>56</b>	0.9843 <b>25</b>	0.295 <b>7.5</b>	5/16 <b>M8</b>	SB204-12	PFT204
SBPFT204-13	13/16											SB204-13	
SBPFT204		20										SB204	
SBPFT205-12	3/4		3-3/4 <b>95.3</b>	3 <b>76</b>	11/32 <b>9</b>	11/16 <b>17</b>	0.083 <b>2.1</b>	2-3/8 <b>66</b>	1.0630 <b>27</b>	0.295 <b>7.5</b>	5/16 <b>M8</b>	SB205-12	PFT205
SBPFT205-13	13/16											SB205-13	
SBPFT205-14	7/8											SB205-14	
SBPFT205-15	15/16											SB205-15	
SBPFT205-16	1											SB205-16	
SBPFT205		25										SB205	
SBPFT206-17	1-1/16		4-7/16 <b>113</b>	3-9/16 <b>90</b>	0.4331 <b>11</b>	11/16 <b>17</b>	0.104 <b>2.6</b>	2-13/16 <b>71</b>	1.1811 <b>30</b>	0.354 <b>9</b>	3/8 <b>M10</b>	SB206-17	PFT206
SBPFT206-18	1-1/8											SB206-18	
SBPFT206-19	1-3/16											SB206-19	
SBPFT206-20	1-1/4											SB206-20	
SBPFT206		30										SB206	
SBPFT207-20	1-1/4											4-13/16 <b>122</b>	
SBPFT207-21	1-5/16		SB207-21										
SBPFT207-22	1-3/8		SB207-22										
SBPFT207-23	1-7/16		SB207-23										
SBPFT207		35	SB207										